

# 880 SOUTH PINE

MADERA, CA 93637



## PROPERTY DESCRIPTION

Take advantage of this rare opportunity to lease versatile spaces in a town near full capacity. Whether you need retail space, a warehouse, or individual offices, we have options to suit your business needs.

Available Spaces:

Retail: Prime locations with high foot traffic.

Warehouse: Various sizes available for storage or operations.

Individual Offices: Perfect for professionals or small businesses, with flexible lease terms.

Why Lease Here?

**High Demand Area:** With the town nearly at capacity, these openings won't last long.

**Flexible Options:** Choose the size and type of space that fits your business.

**Competitive Rates:** Contact us to verify current rates and available sizes.

## OFFERING SUMMARY

Lease Rate:	Varies depending on unit
Available SF:	Multiple sizes
Units Available	Office and Warehouse

DEMOGRAPHICS	0.3 MILES	0.5 MILES	1 MILE
Total Households	21	137	2,647
Total Population	62	447	9,034
Average HH Income	\$84,723	\$89,762	\$83,802



RE/MAX GOLD

Each office independently owned and operated

**KIRK ATAMIAN**  
Commercial Specialist  
559.246.0000  
kirkatamian@gmail.com  
CalDRE #02127378

501 North E St, Suite H, Madera, CA 93638

All information contained herein is deemed reliable but not guaranteed. Each office independently owned and operated

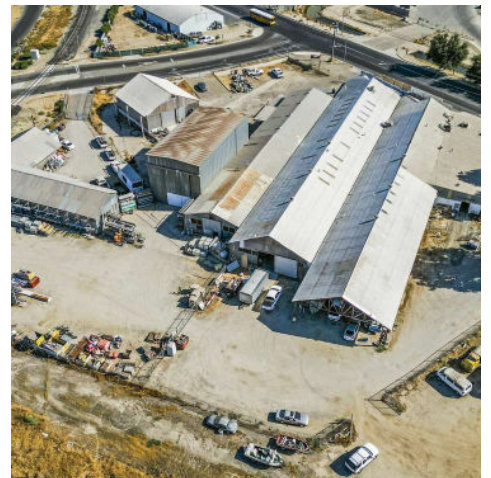
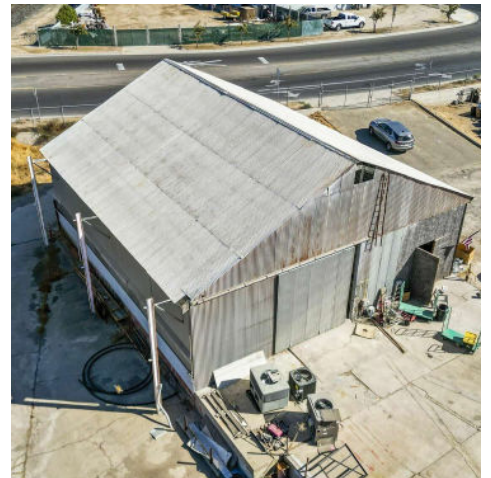
FOR LEASE

RETAIL PROPERTY

ADDITIONAL PHOTOS

# 880 SOUTH PINE

MADERA, CA 93637



RE/MAX GOLD

Each office independently owned and operated

All information contained herein is deemed reliable but not guaranteed. Each office independently owned and operated

**KIRK ATAMIAN**  
Commercial Specialist

559.246.0000

kirkatamian@gmail.com

CalDRE #02127378

501 North E St, Suite H, Madera, CA 93638

# 880 SOUTH PINE

MADERA, CA 93637



Map data ©2024 Imagery ©2024 Airbus, Maxar Technologies



RE/MAX GOLD  
Each office independently owned and operated

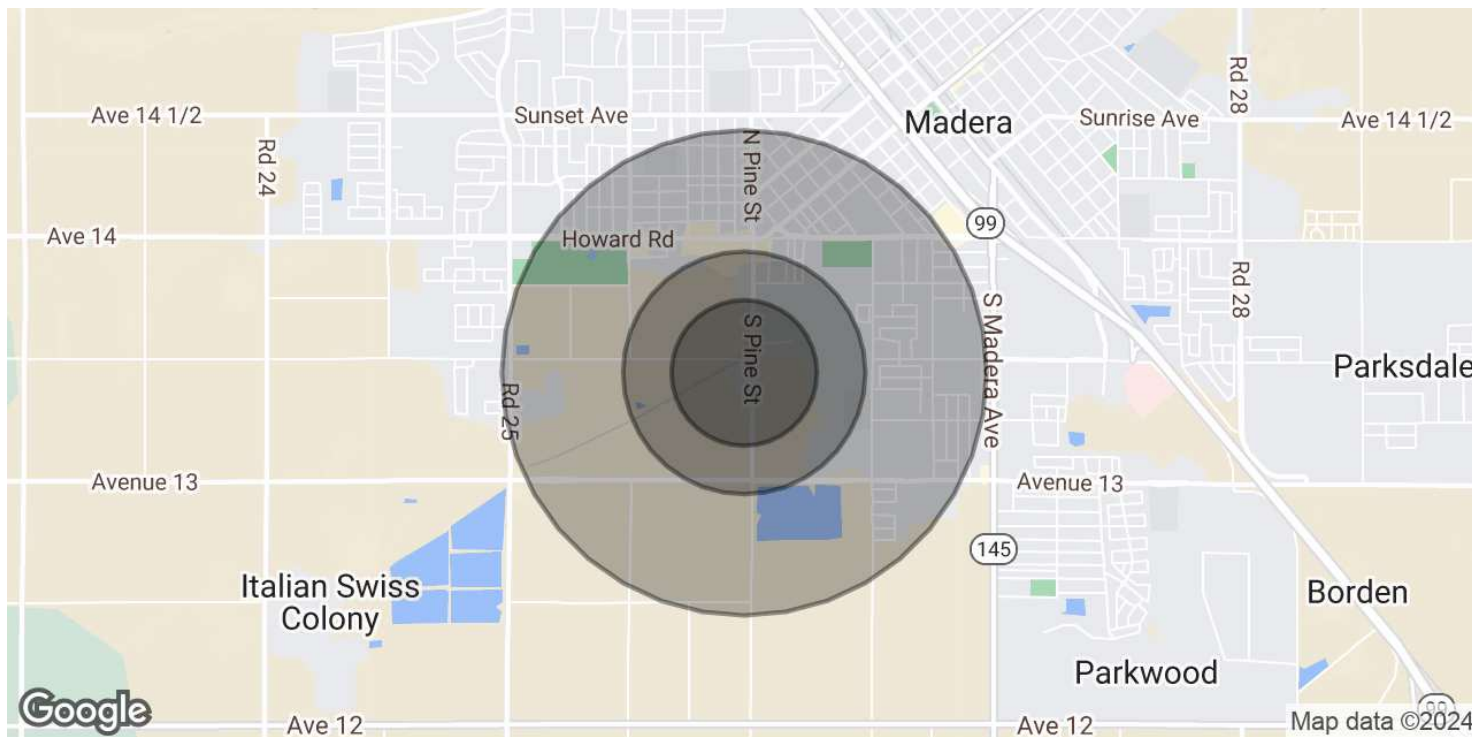
All information contained herein is deemed reliable but not guaranteed. Each office independently owned and operated

**KIRK ATAMIAN**  
Commercial Specialist  
559.246.0000  
kirkatamian@gmail.com  
CalDRE #02127378

501 North E St, Suite H, Madera, CA 93638

# 880 SOUTH PINE

MADERA, CA 93637



POPULATION	0.3 MILES	0.5 MILES	1 MILE
Total Population	62	447	9,034
Average Age	37	35	33
Average Age (Male)	34	33	32
Average Age (Female)	39	37	34

HOUSEHOLDS & INCOME	0.3 MILES	0.5 MILES	1 MILE
Total Households	21	137	2,647
# of Persons per HH	3	3.3	3.4
Average HH Income	\$84,723	\$89,762	\$83,802
Average House Value	\$389,102	\$411,913	\$508,068

Demographics data derived from AlphaMap



RE/MAX GOLD

Each office independently owned and operated

**KIRK ATAMIAN**  
 Commercial Specialist  
 559.246.0000  
 kirkatamian@gmail.com  
 CalDRE #02127378

501 North E St, Suite H, Madera, CA 93638