

LEASE INFORMATION

COMMERCIAL PROPERTY

128

1930 HOWARD RD #125
MADERA CALIF 93637



KA
KIRK ATAMIAN

KIRK ATAMIAN
559-246-0000
KIRK@KIRKATAMIANREALESTATE.COM
DRE:021273785

RE/MAX
COMMERCIAL

WWW.KIRKATAMIANREALESTATE.COM

IMPORTANT DISCLOSURES

REMAX Commercial Lease Brochure Disclaimer

This brochure has been prepared solely for informational purposes.

The information contained herein is believed to be accurate and reliable; however, no representation, warranty, or guarantee, expressed or implied, is made as to its accuracy, completeness, or correctness. All information is subject to change without notice.

Prospective tenants are strongly encouraged to perform their own independent investigations and consult with legal, financial, and real estate advisors prior to making any leasing decisions. REMAX Commercial and its agents expressly disclaim any and all liability for representations, express or implied, contained in or omitted from this brochure.

This brochure and its contents are confidential and intended solely for the use of the recipient. Reproduction or distribution of any part of this document without the prior written consent of REMAX Commercial is strictly prohibited.

All lease offers, if made, will be extended only to qualified tenants and in compliance with all applicable laws and regulations.

By accepting this brochure, the recipient acknowledges and agrees to the terms and conditions outlined above.

.



TABLE OF CONTENTS

- 01 PROPERTY INFORMATION
- 02 FLOOR PLANS
- 03 PROPERTY PHOTOS
- 04 MAPS & DEMOGRAPHICS



01

PROPERTY INFORMATION

LEASE INFORMATION

PROPERTY SUMMARY



LEASE INFORMATION

Available now leasing: 3,024 SF at 1930 Howard Rd #125 in Madera. Features include an open floor plan, private offices, and ample parking. Prime location near offices and retail. Ideal for office, retail, or service use.

PROPERTY ADDRESS	1930 Howard Rd #125
SQUARE FEET	3,024
LOT SIZE	3,024
PARCEL NUMBER	009-361-018
ASKING PRICE	\$1.49 sq ft per month
TYPE OF LEASE	NNN
LEASE LENTH	3-5 years





PROPERTY SUMMARY

Retail/Office Space Available – Prime Howard Rd Location

Join a thriving shopping center anchored by Golden One Credit Union and Round Table Pizza! Located on busy Howard Rd, this center boasts high foot traffic, great visibility, and ample parking.

Three suites available, perfect for retail or office use—one is sure to fit your needs. Flexible layouts make it easy to customize your space.



HIGHLIGHTS

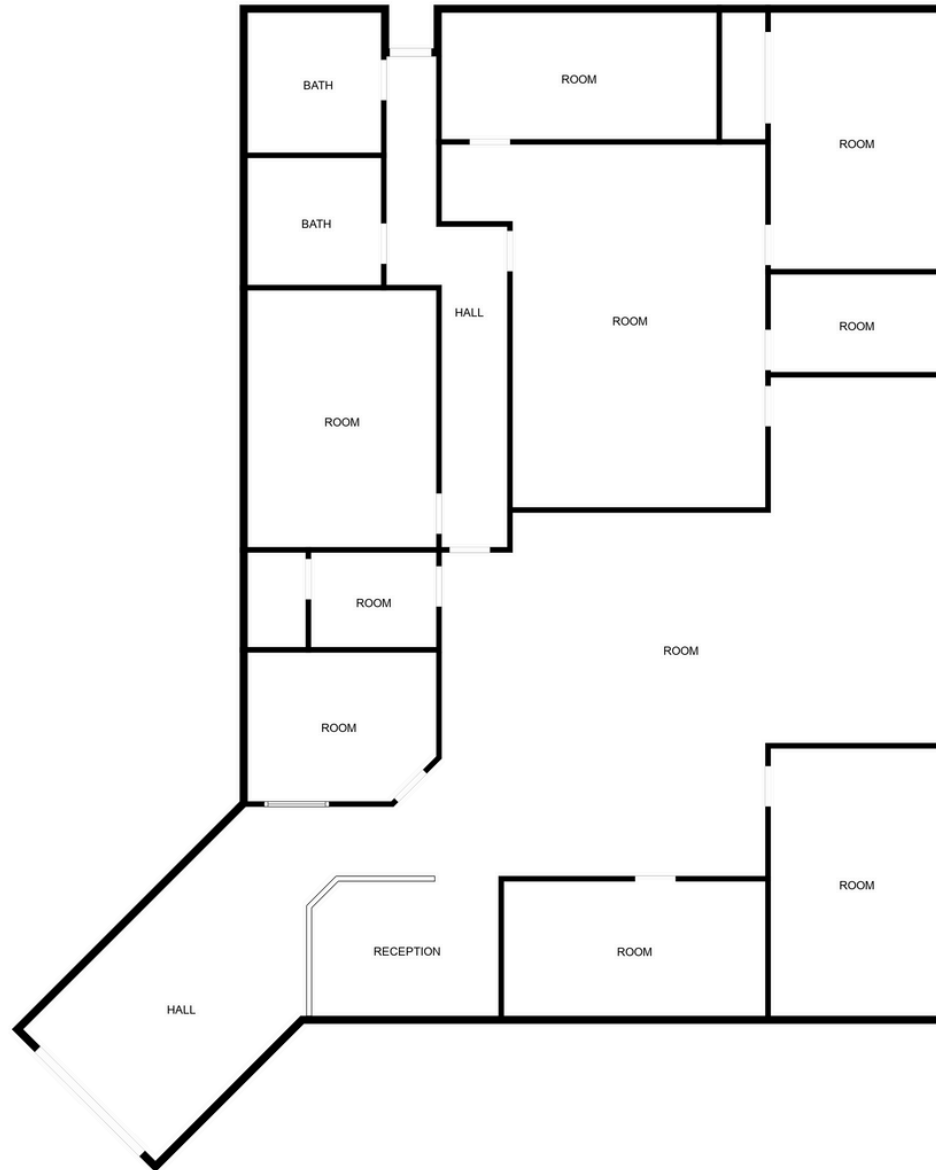
- High-traffic location
- Strong anchor tenants
- Ideal for retail, service, or professional use.

02

FLOOR PLANS



FLOOR PLANS



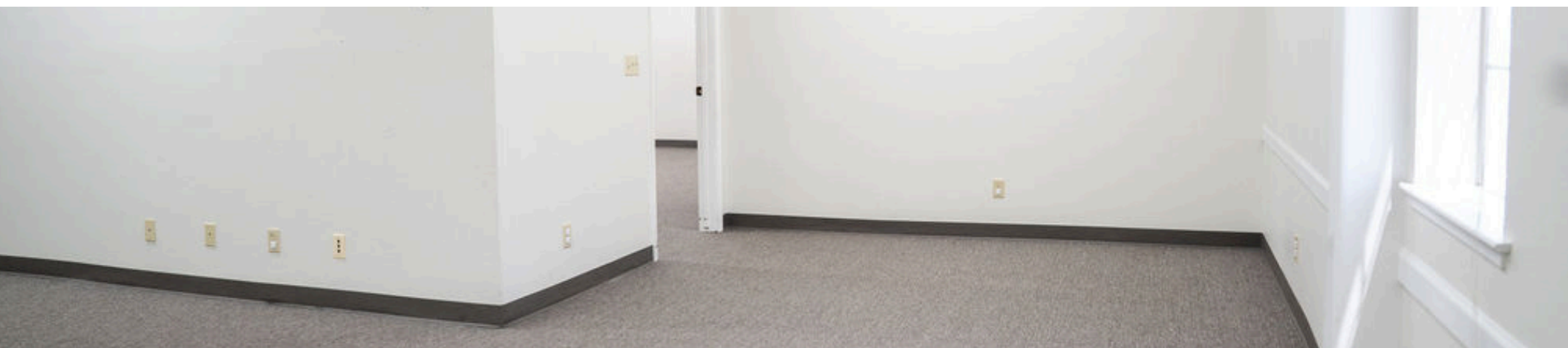
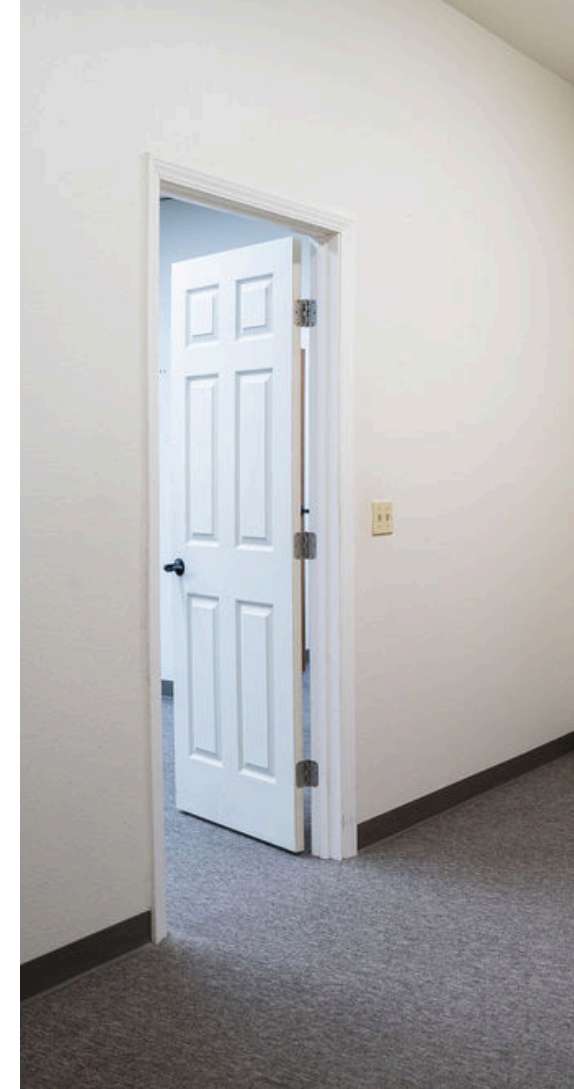
03

PROPERTY PHOTOS



PROPERTY PHOTOS





04

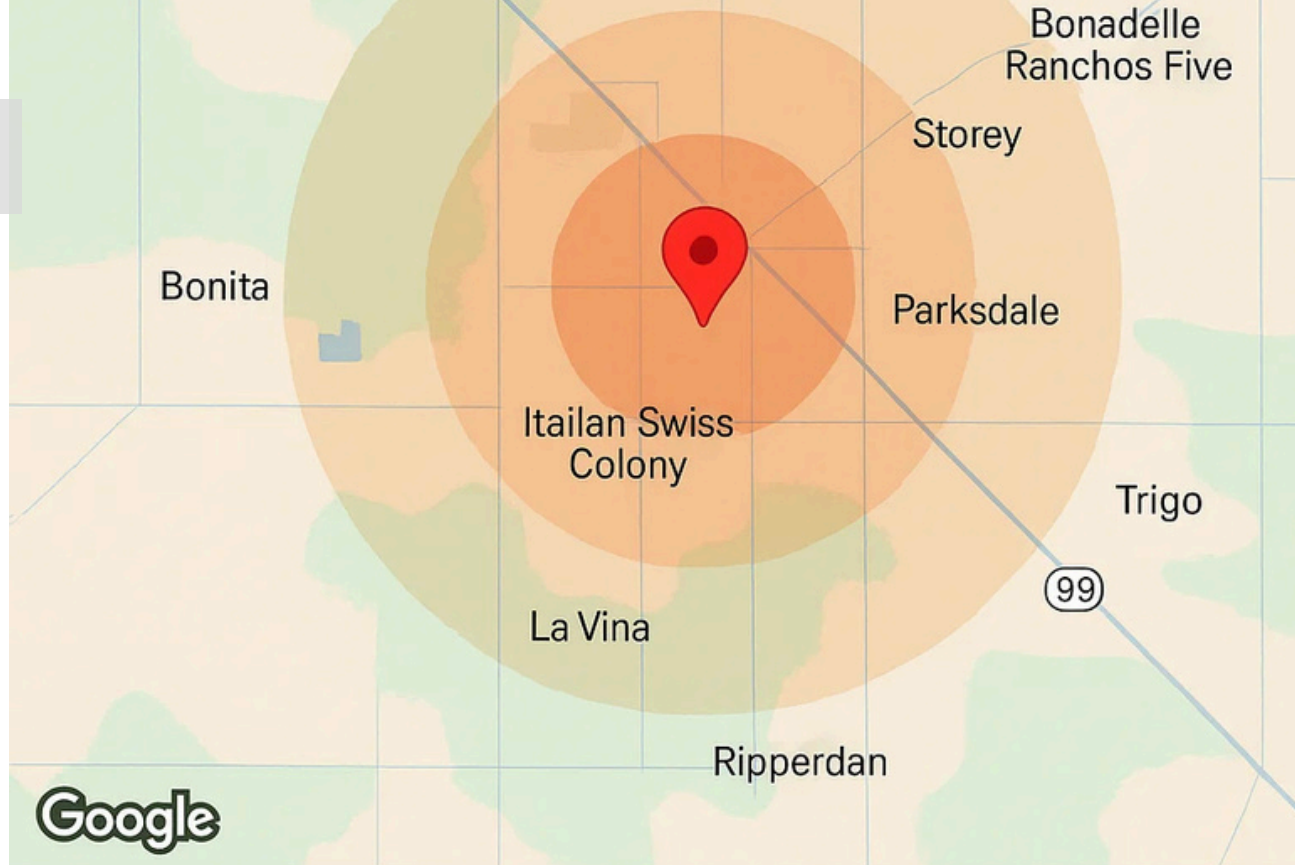
MAPS & DEMOGRAPHICS



MAPS



DEMOGRAPHICS



Population	1 Mile	3 Miles	Housing	1 Mile
Males	2.439	35.760	Total Units	1.328
Female	2.165	72.341	Owrier Ocupied	13.704
Total Population	4.604	72.341	Owner Occupied	11.845
			Vacant	1.401
Age	1 Mile	3 Miles	Income	
Ages 0-14	1.176	15,056	<\$15,000	177
Ages 15-24	718	9.317	\$15,000-24,999	276
Ages 25-44	1.106	19.081	\$25,000-34,999	148
Ages 65+	696	7,490	\$35,000-49,999	216
Income	1 Mile	5 Miles	\$50,000-74,999	179
<\$15,000	1.328	19.704	\$75,000-99,999	190
\$15,000- 24.999	594	11.845	\$100,000-149,999	166
\$25,000- 34.999	148	6.739	\$150,000- 199,999	112
\$35,000- 49,999	216	6.739	\$200,000+	20



CONTACT

Kirk Atamian
559-246-0000
kirk@kirkatamianrealestate.com
DRE:02127378

KA RE/MAX
KIRK ATAMIAN COMMERCIAL

REMAX SUCCESS | 501 North E #H, Madera, CA | 559-246-0000 |
www.kirkatamianrealestate.com.com