

LEASE INFORMATION

COMMERCIAL PROPERTY

1930 HOWARD RD #133
MADERA CALIF 93637

KA
KIRK ATAMIAN

KIRK ATAMIAN
559-246-0000
KIRK@KIRKATAMIANREALESTATE.COM
DRE:021273785

RE/MAX
COMMERCIAL

WWW.KIRKATAMIANREALESTATE.COM

IMPORTANT DISCLOSURES

REMAX Commercial Lease Brochure Disclaimer

This brochure has been prepared solely for informational purposes.

The information contained herein is believed to be accurate and reliable; however, no representation, warranty, or guarantee, expressed or implied, is made as to its accuracy, completeness, or correctness. All information is subject to change without notice.

Prospective tenants are strongly encouraged to perform their own independent investigations and consult with legal, financial, and real estate advisors prior to making any leasing decisions. REMAX Commercial and its agents expressly disclaim any and all liability for representations, express or implied, contained in or omitted from this brochure.

This brochure and its contents are confidential and intended solely for the use of the recipient. Reproduction or distribution of any part of this document without the prior written consent of REMAX Commercial is strictly prohibited.

All lease offers, if made, will be extended only to qualified tenants and in compliance with all applicable laws and regulations.

By accepting this brochure, the recipient acknowledges and agrees to the terms and conditions outlined above.

.

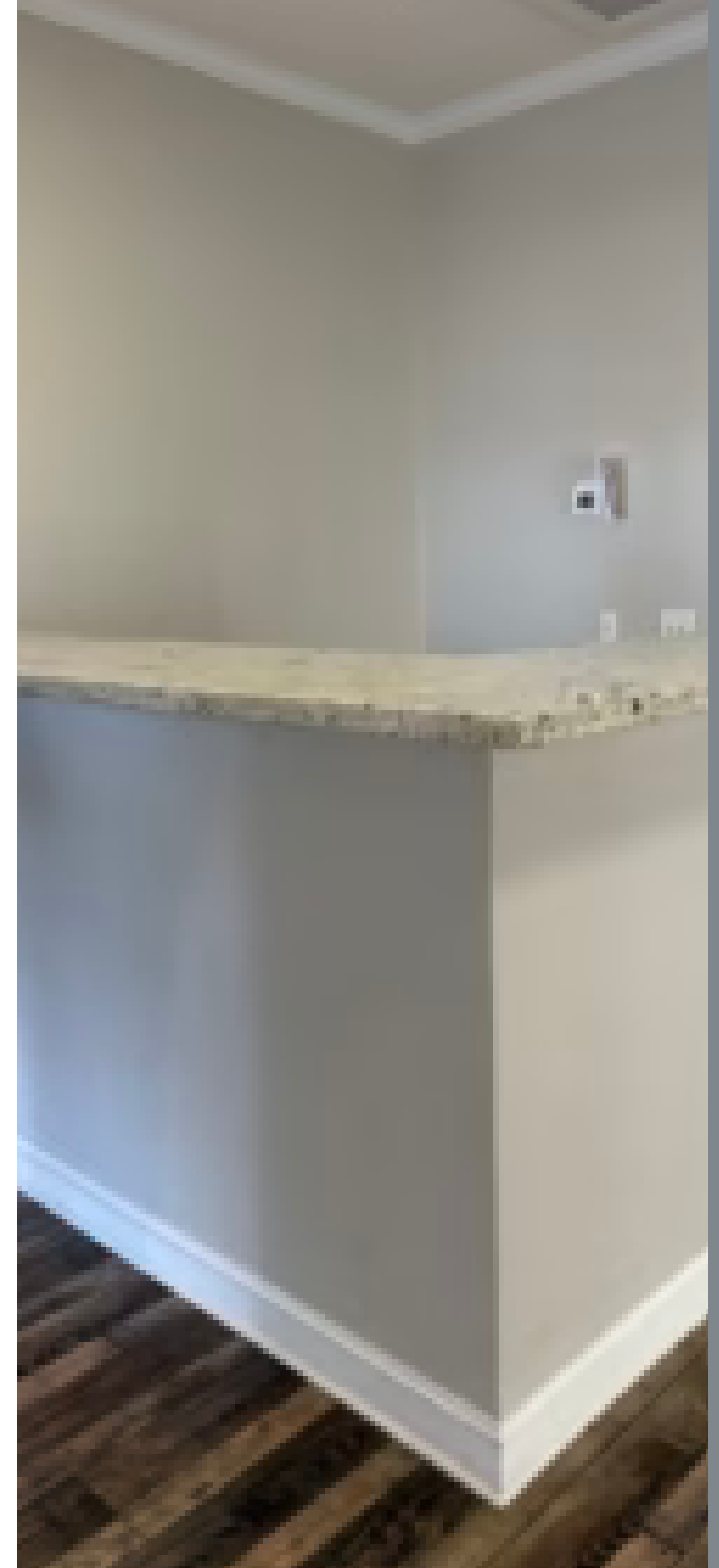


TABLE OF CONTENTS

- 01 PROPERTY INFORMATION
- 02 FLOOR PLANS
- 03 PROPERTY PHOTOS
- 04 AERIALS & MAPS

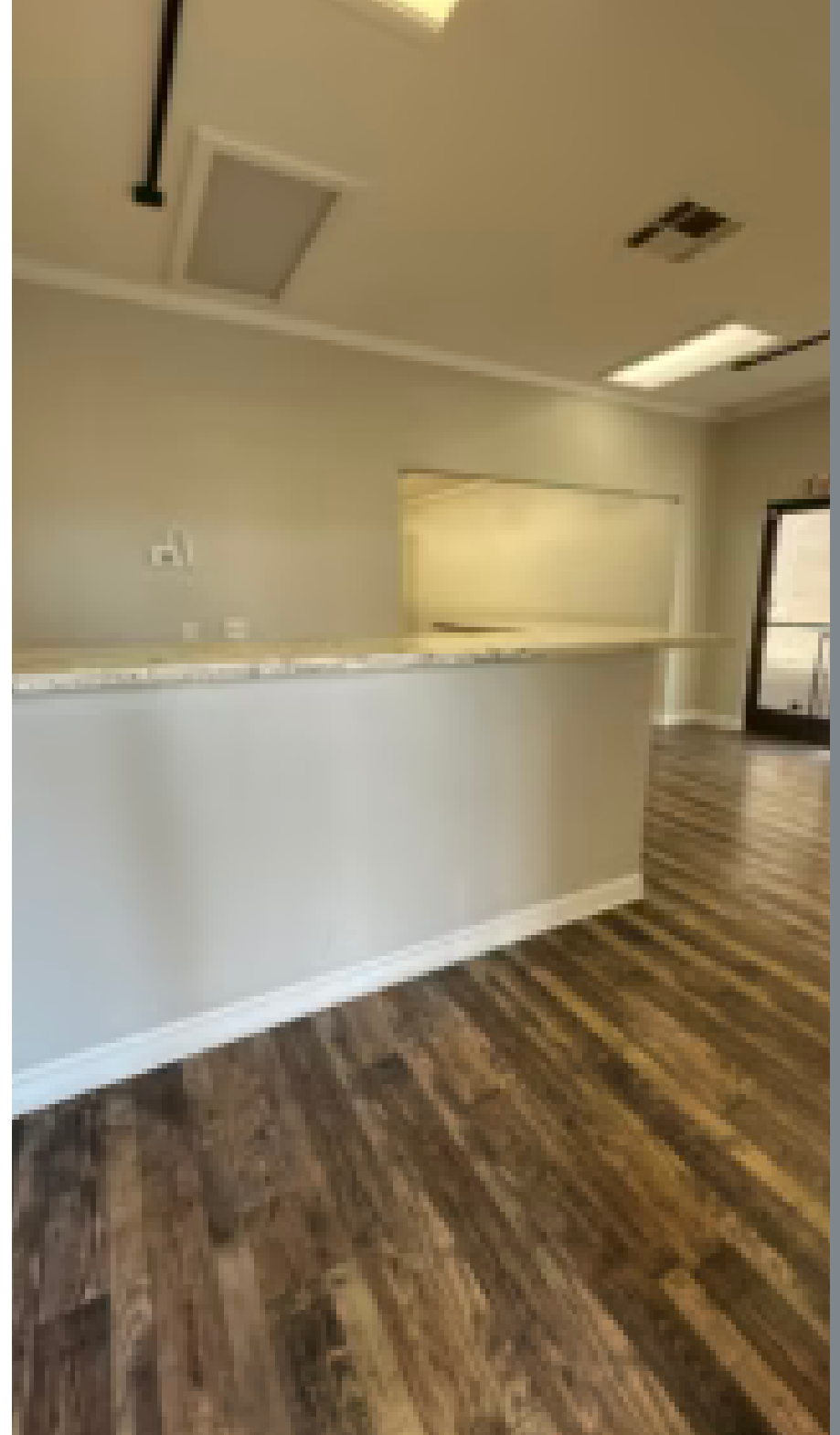


01

PROPERTY INFORMATION

LEASE INFORMATION

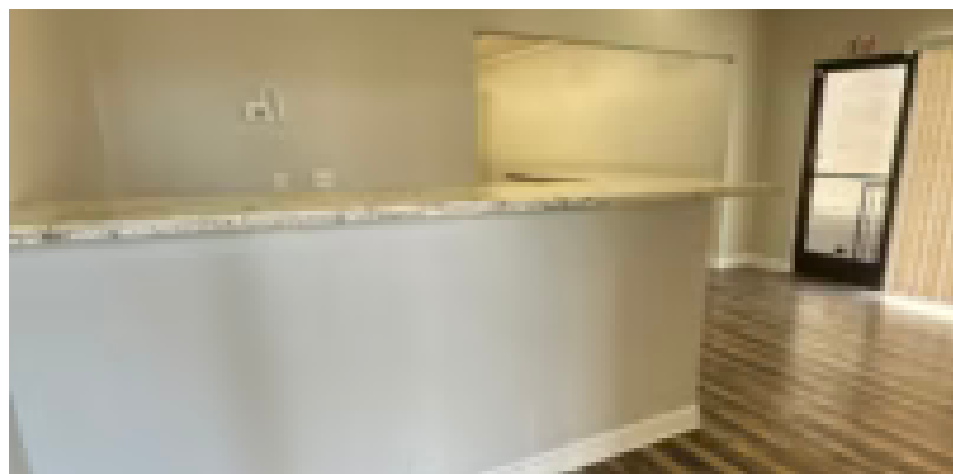
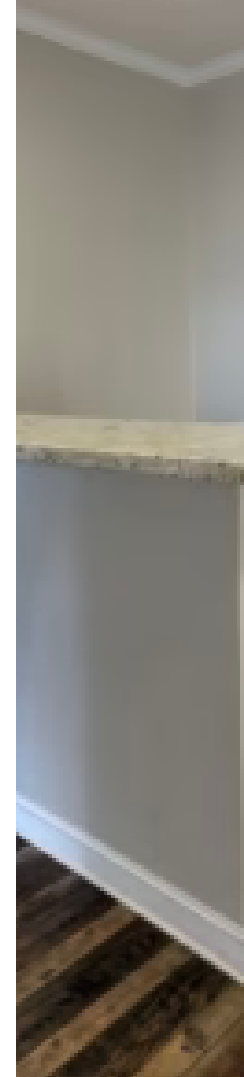
PROPERTY SUMMARY



LEASE INFORMATION

Available now leasing: 916 SF at 1930 Howard Rd #133 in Madera. Features include an open floor plan, private offices, high-traffic, and ample parking. Prime location near offices and retail. Ideal for office, retail, or service use.

PROPERTY ADDRESS	1930 Howard Rd #133
SQUARE FEET	916
LOT SIZE	19,585
PARCEL NUMBER	009-361-018
ASKING PRICE	\$1.49 sq ft per month
TYPE OF LEASE	NNN
LEASE LENTH	3-5 years





PROPERTY SUMMARY

Retail/Office Space Available – Prime Howard Rd Location

Join a thriving shopping center anchored by Golden One Credit Union and Round Table Pizza! Located on busy Howard Rd, this center boasts high foot traffic, great visibility, and ample parking.

Three suites available, perfect for retail or office use—one is sure to fit your needs. Flexible layouts make it easy to customize your space.

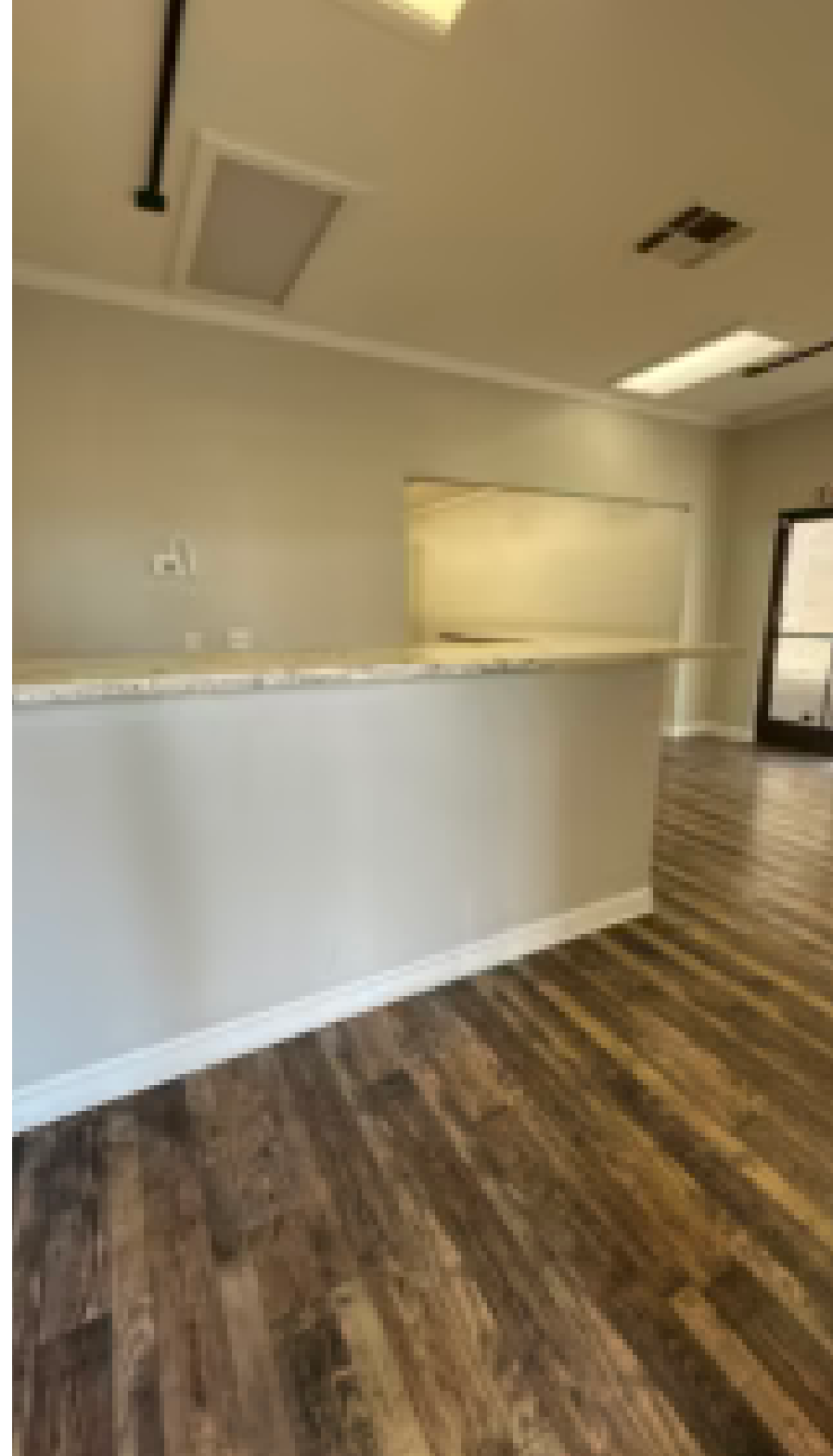


HIGHLIGHTS

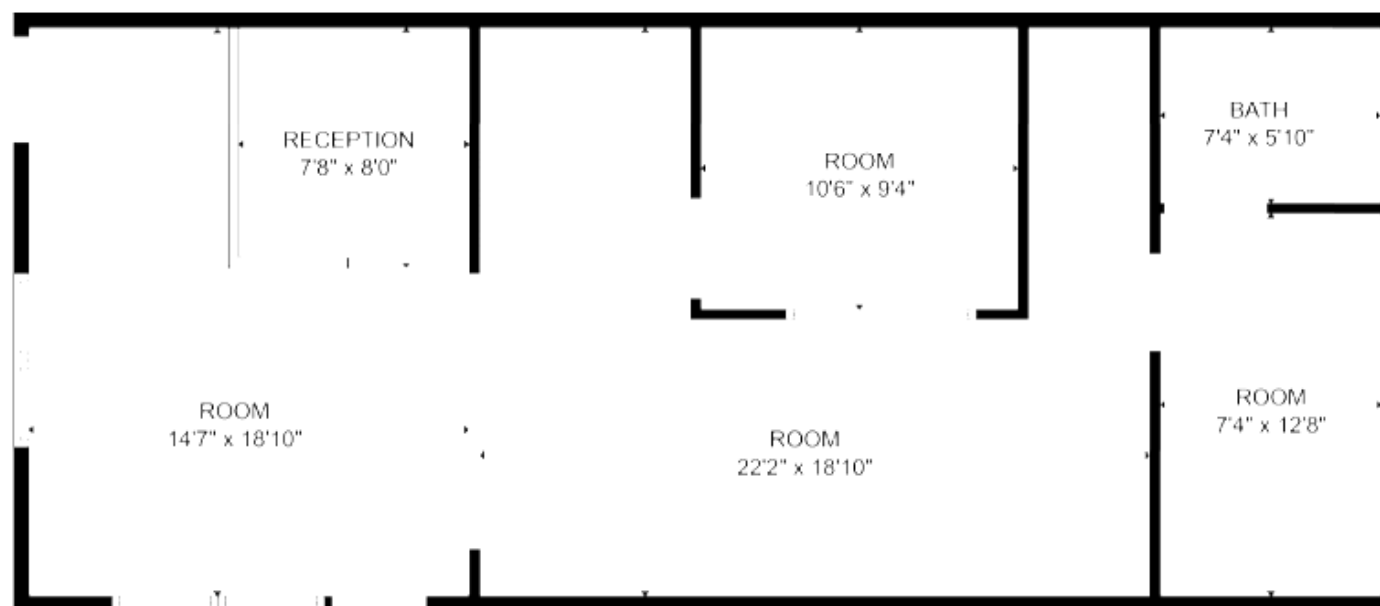
- High-traffic location
- Strong anchor tenants
- Perfect for services, retail, or professional use.
- 916 SF available

02

FLOOR PLANS

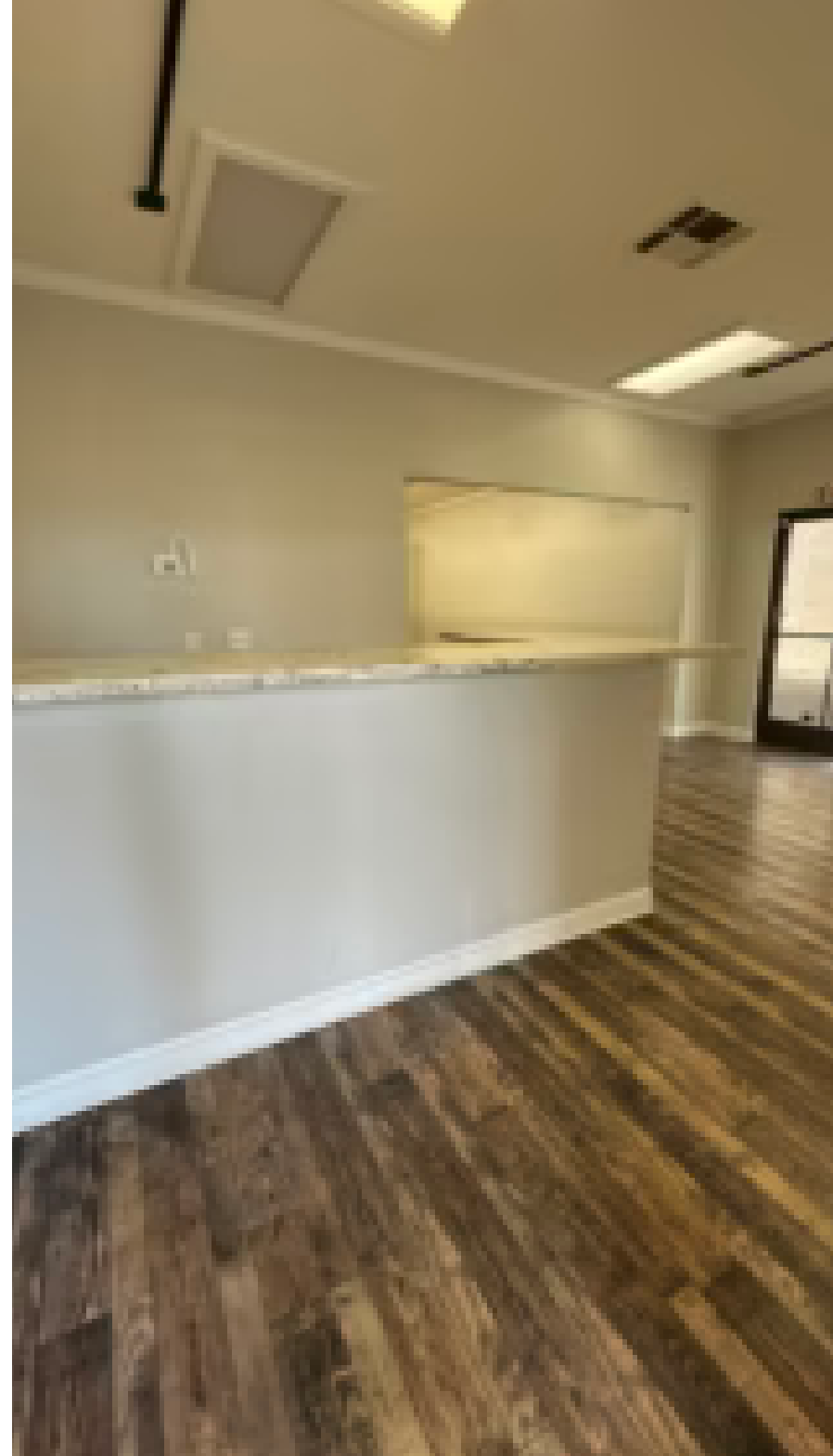


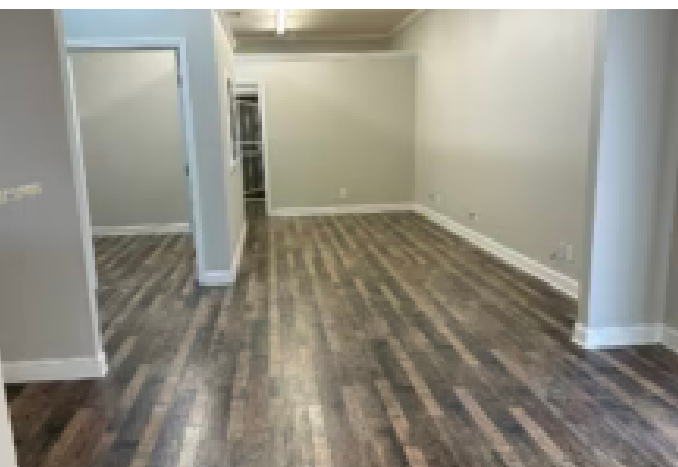
FLOOR PLANS



03

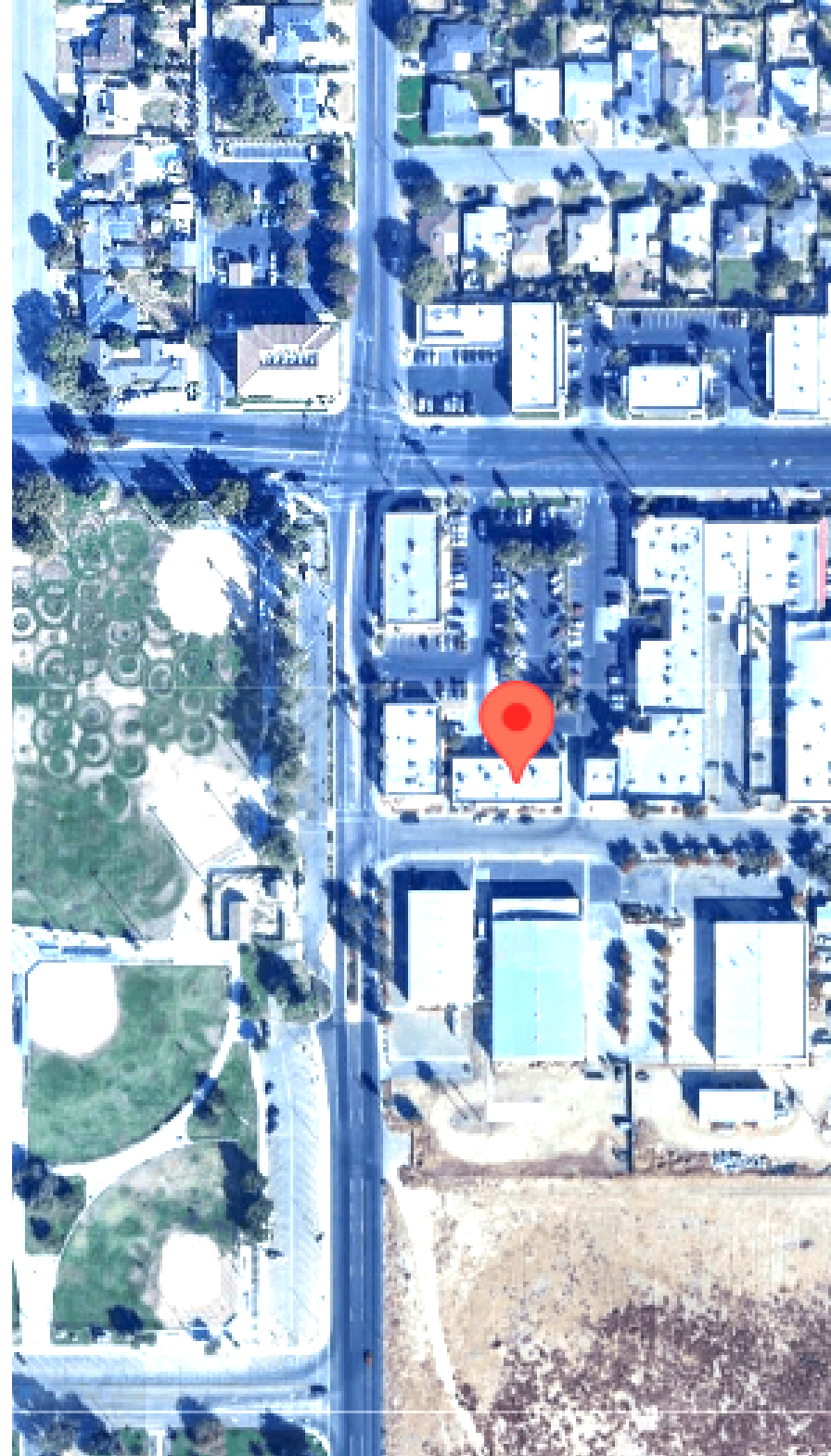
PROPERTY PHOTOS





04

AERIALS & MAPS





AERIAL



CONTACT

Kirk Atamian
559-246-0000
kirk@kirkatamianrealestate.com
DRE:02127378



REMAX SUCCESS | 501 North E #H, Madera, CA | 559-246-0000 |
www.kirkatamianrealestate.com.com